



This study has been approved by your School Board and the Ministry of Education.

## Contact the Research Team:

**Melissa Kimber**  
Project Coordinator

Offord Centre for Child Studies  
McMaster University Chedoke Site,  
Central Building Room 310  
1280 Main Street West,  
Hamilton, Ontario; L8S 4K1

E-mail: kimberms@mcmaster.ca  
Phone: 905-521-2100 ext. 74359

Surveys are VOLUNTARY and ANONYMOUS!



By law, all of your answers are protected and CONFIDENTIAL!

## Find out more on the study website:

[www.ontariochildhealthstudy.ca](http://www.ontariochildhealthstudy.ca)



***Make a difference in the lives of children and youth!***

***Say 'YES' if asked to participate in the 2014 School Mental Health Surveys.***

*Enquêtes sur la santé mentale des écoles*



*School Mental Health Surveys*

**Offord** CENTRE FOR CHILD STUDIES

 **McMaster University**



**2014 Ontario Child Health Study: School Mental Health Surveys**

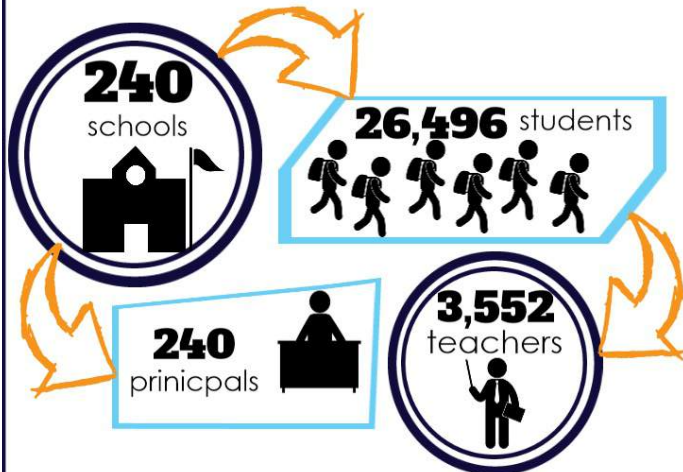
***Information for Teachers***

# What are the School Mental Health Surveys (SMHS)?

- province-wide, school-based study
- studying school environment & influences on child mental health
- part of the 2014 Ontario Child Health Study: in-home study of families & youth
- schools selected for SMHS are in neighbourhoods taking part in the Ontario Child Health Study

## BY THE NUMBERS...

### School Mental Health Surveys:



## What is involved?



240 schools selected...

...contacted in Fall 2014.



questions for teachers, principals, & students...



we send consent forms home 1-2 weeks before.



...about feelings, behaviours, classroom, and school.



by law, all of your answers are confidential!

## PLEASE NOTE...

You may also be contacted by Statistics Canada to complete a questionnaire on one of your students. This is part of the 2014 Ontario Child Health Study, not a part of the SMHS.

## What is involved for Teachers?

Thank you for sharing your experiences of your school environment & student mental health. We know you are busy with lots of demands on your time but YOUR contribution counts!

### WE ARE INVITING...

- ▶ Classroom teachers
- ▶ Principals



We are asking you to complete an **ANONYMOUS** questionnaire. You will NOT be asked to provide your name anywhere on the questionnaire; no one outside of the research team will see your responses.



The questionnaire will take approximately 20 minutes.



Participation is **VOLUNTARY**.