

2014 Ontario
Child Health
Study

OCHS comparisons 1983 vs. 2014

The 2014 OCHS was conducted 30 years after the original Ontario Child Health Study was administered in 1983. How do the two studies compare?

1983 OCHS

vs.

2014 OCHS

Differences

Sample Size

2,623 households

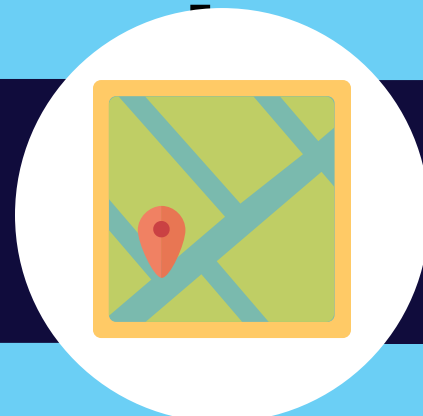


Sample Size

6,537 households

Cluster Sampling

Cost reduction strategy



Cluster Sampling

Determine contextual effects

Stratification

By place only



Stratification

By place & income

Investigative team

Small (5)



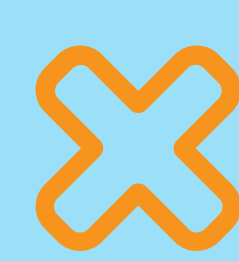
Investigative team

Large (43)

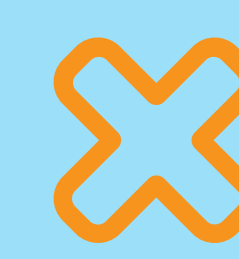
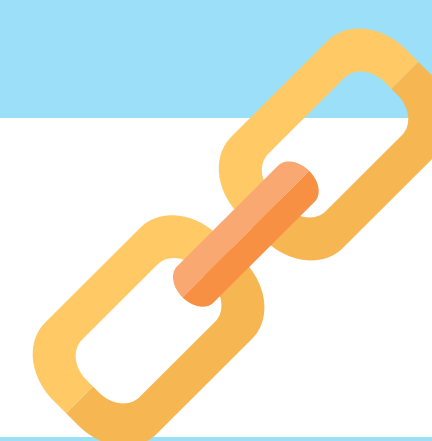
2014 Novel Features



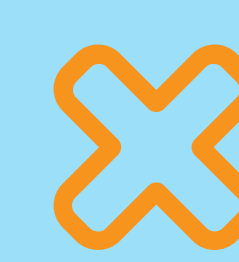
Partner/spouse
questionnaire



Administrative data
linkage



School Mental Health
Surveys



Government
partners



What will we learn?

Prevalence of
child mental
disorder...

The 1983 study found 1 in 5 children have a mental health problem. Has this number changed in the past 30 years?



...and prevalence among
children with different health
conditions

What sort of disorder rates are there in children with functional health conditions, medical conditions, or neither?

Mental health service usage



Responsiveness of the health care system to child and youth mental health need.

Socioeconomic status
gradients in child
mental health

How does being above or below the poverty line influence the rate of mental health disorders?



Contextual influences

Influence of neighbourhoods, families, and schools on child mental health.

